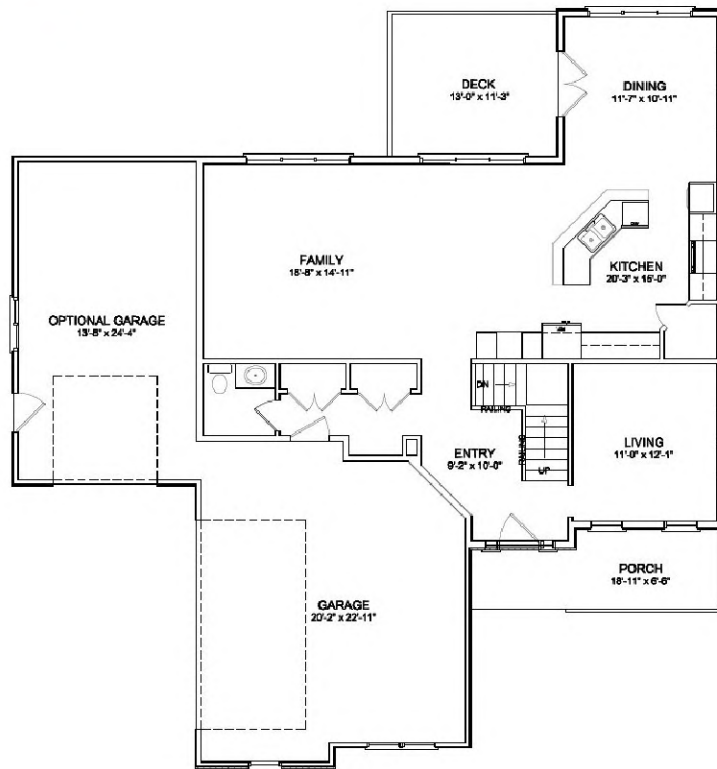


Victoria

- ◆ 3766 Total Sq Ft
- ◆ Four Bedrooms on Upper Level, 2 in Basement
- ◆ 3 1/2 Bathrooms
- ◆ Formal Living Room
- ◆ Open Floor Plan
- ◆ Optional 3rd car garage



HIGHMARK CONSTRUCTION

For more information
please contact Jared at
764-9200 or 753-3131
jared@mv399.com
www.highmarknow.com

