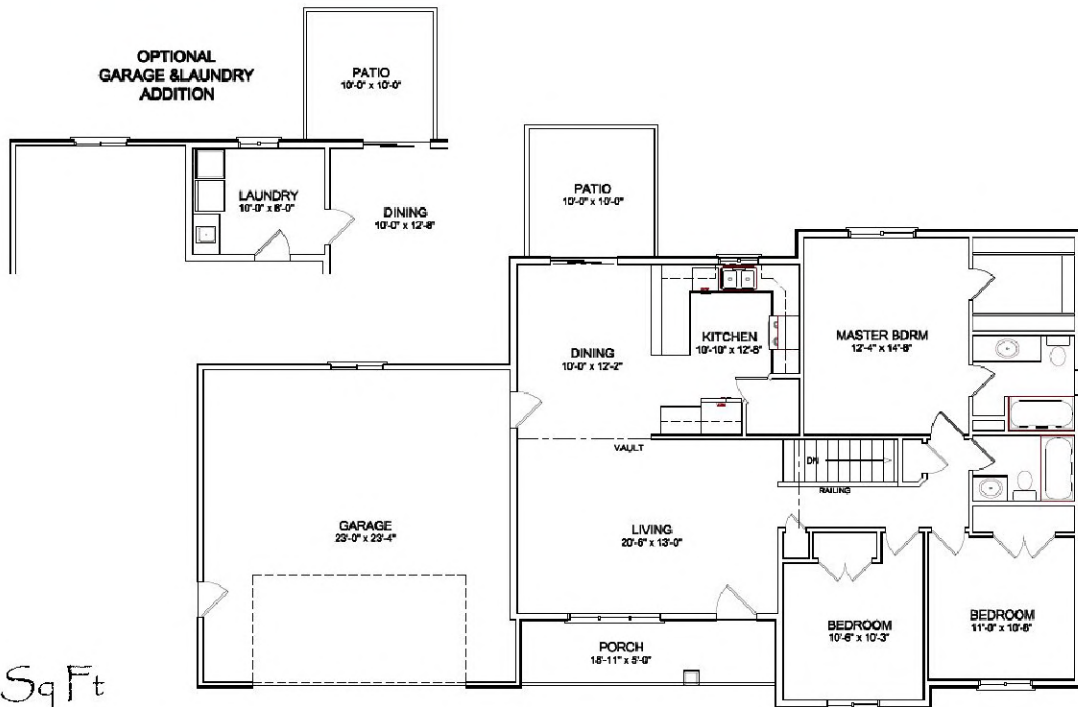
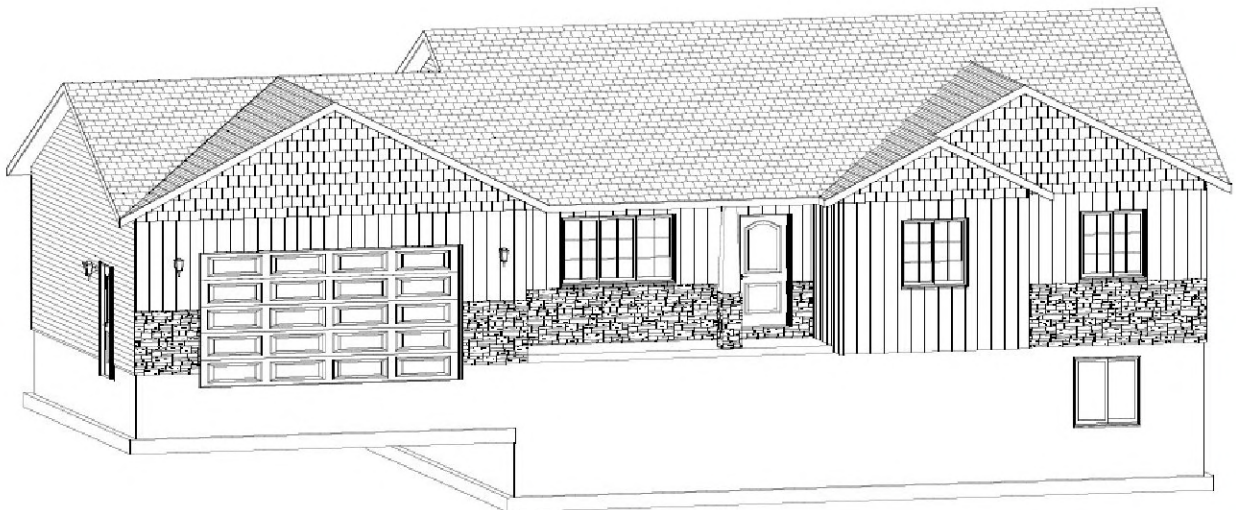


# HIGHMARK CONSTRUCTION

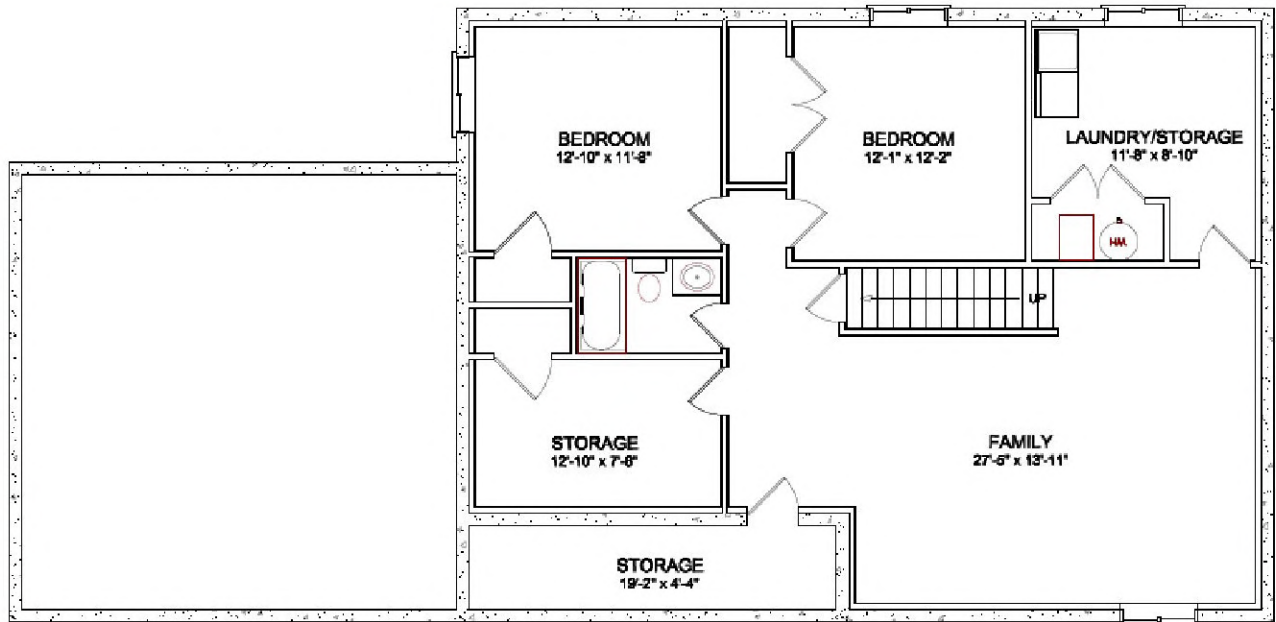


- ◆ 2691 Sq Ft
- ◆ 3 Bedrooms on Upper Level, 2 in Basement
- ◆ 3 Bathrooms
- ◆ Vaulted Ceilings
- ◆ Optional garage/laundry addition

## Bellevue II



# HIGHMARK CONSTRUCTION



For more Information please contact  
Jared at 764-9200 or 753-3131  
jared@mv399.com  
www.highmarknow.com